

GANPATI PAYAL STITCHED VOL 31 - Dress Material

No Of Pieces: 30 Pieces

Brand: GANPATI COTTON SUITS

Type: Stitched(Readymade) Without lining

Top Fabric: Pure Heavy Cotton Printed L,XL,2XL (3XL) 10 RS EXTRA

Bottom Fabric: Pure Heavy Cotton Printed Free Size Patiala

Top Length: 40-42 inch Approx

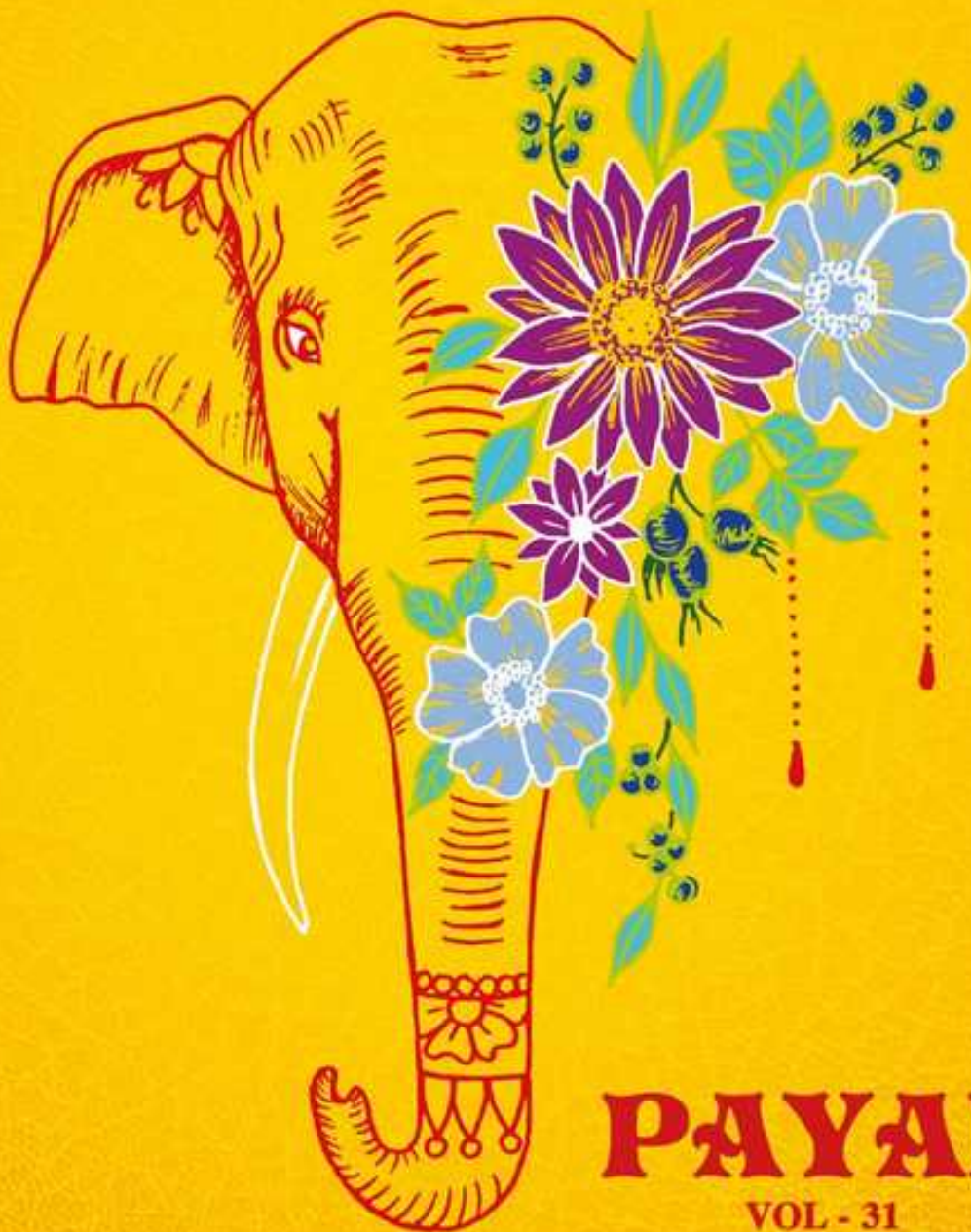
Dupatta Fabric: Pure Heavy Lawn Cotton 2.25 meters approx

Packing: Pouch Packing

Occasions: Formal Dailywear

Season: All seasons summer and winter wear

Weight: 22 KG



PAYAL
VOL - 31






Ganpati
COTTON SUIT
PAYAL
3110


Ganpati
COTTON SUIT
PAYAL
3103








Ganpati
COTTON SUIT
PAYAL
3122




Ganpati
COTTON SUIT
PAYAL
3108




Ganpati
COTTON SUIT
PAYAL
3126



3117



3118



3119



3120



3121



3122



3123



3124



3125



3126



3127



3128



3129



3130


Ganpati
 COTTON SUIT
PAYAL
 VOL-31



3101



3102



3103



3104



3105



3106



3107



3108



3109



3110



3111



3112



3113



3114



3115



3116


Ganpati
COTTON SUIT
PAYAL
3121




Ganpati
COTTON SUIT
PAYAL
3123






Ganpati
COTTON SUIT
PAYAL
3130


Ganpati
COTTON SUIT
PAYAL
3117






Ganpati
COTTON SUIT
PAYAL
3114




Ganpati
COTTON SUIT
PAYAL
3128




Ganpati
COTTON SUIT
PAYAL
3124


Ganpati
COTTON SUIT
PAYAL
3119






Ganpati
COTTON SUIT
PAYAL
3112


Ganpati
COTTON SUIT
PAYAL
3113






Ganpati
COTTON SUIT
PAYAL
3116


Ganpati
COTTON SUIT
PAYAL
3115




Ganpati
COTTON SUIT
PAYAL
3125






Ganpati
COTTON SUIT
PAYAL
3106




Ganpati
COTTON SUIT
PAYAL
3105




Ganpati
COTTON SUIT
PAYAL
3107




Ganpati
COTTON SUIT
PAYAL
3127






Ganpati
COTTON SUIT
PAYAL
3120


Ganpati
COTTON SUIT
PAYAL
3109






Ganpati
COTTON SUIT
PAYAL
3118


Ganapati
COTTON SUIT
PAYAL
3111

