

MSF PASHMINA VOL 2 - Dress Material

No Of Pieces: 12 Pieces

Brand: MANGAL SHREE FABRICS

Type: Unstitched Material Pure heavy loan cotton

Top Fabric: Pure Heavy Lawn Cotton Flower Printed Approx 2.50 meters

Bottom Fabric: Pure Heavy Lawn Cotton Approx 2.25 meters

Dupatta Fabric: Pure Cotton Mal Mal Approx 2.25 meters

Packing: Single Pieces Pouch + Catalogue Bag

Season: Summer All season

Occasions: Casual Wear Dailywear

Weight: 10 KG

MANGAL
SHREE-FABRICS



PASHMINA



CELEBRATE
In style



TIMELESS
Trends



2007

MANGAL
SHREE-FABRICS



PASHMINA





MANGAL
SHREE FABRICS



PASHMINA



LUXURY

fabrics

2009

MANGAL
SHREEN FABRICS



PASHMINA



MANGAL
SHREE FABRICS



PASHMINA



MANGAL
SHREE FABRICS



PASHMINA



MANGAL
SHREE-FABRICS



PASHMINA

2012



MANGAL
SHREE FABRICS



PASHMINA



ELEGANCE
ethnic



2005







2011

MANGAL
SHREE FABRICS



PASHMINA



2002



GORGEOUS
Looks

FASHIONISTA
fashion



2003

TRADITIONAL
Glamour



MANGAL
SHREE FABRICS



PASHMINA

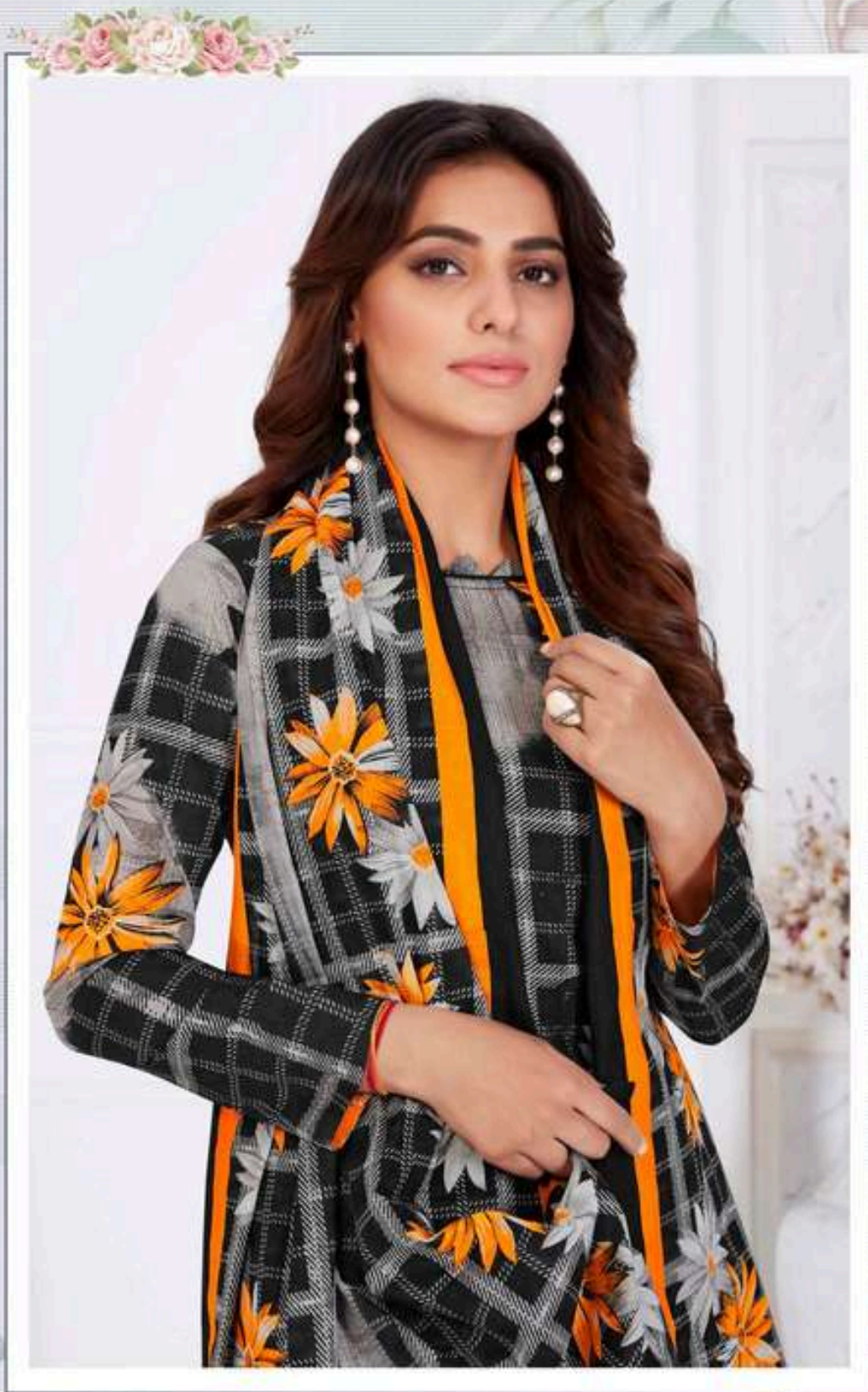
VOL-2



TRADITIONAL
Glamour



2006



MANGAL
SHREE FABRICS



PASHMINA





2001



2002



2003



2004



2005



2006



2007



2008



2009



2010



2011



2012

MANGAL
SHREE-FABRICS



PASHMINA

FABULOUS
fabrics

