

# **SURYAJYOTI NAISHAA VOL 26 - Dress Material**

**No Of Pieces:** 12 Pieces

**Brand:** SURYAJYOTI

**Type:** Unstitched Material Only Fabrics with Chiffon dupatta

**Top Fabric:** Pure Satin Cotton Approx 2.50 meters

**Bottom Fabric:** Dyed Lawn Approx 2.50 meters

**Dupatta Fabric:** Pure Heavy Chiffon Printed Approx 2.25 meters

**Packing:** Single Pieces Pouch + Catalogue Bag

**Season:** Summer All season

**Occasions:** Casual Wear Dailywear

**Weight:** 10 KG





FASHION  
&  
TREND  
ARE  
FUSED  
FOR  
CLASSY  
WARDROBE.





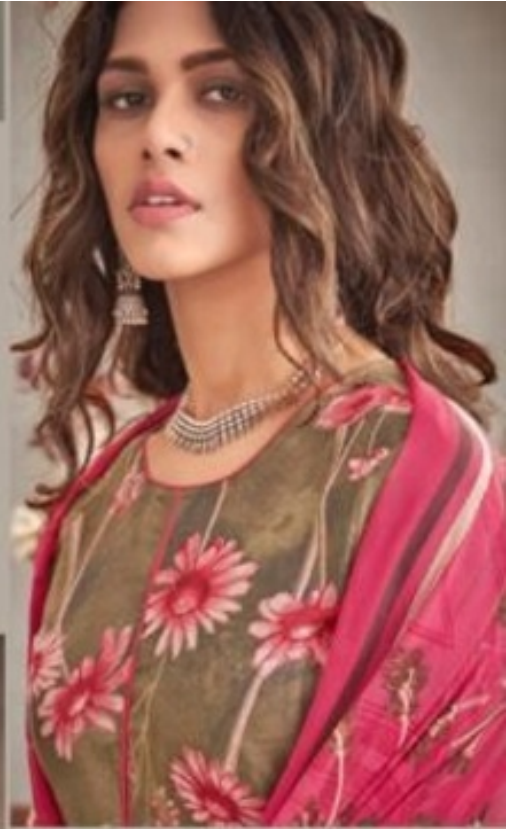
*Suryajyoti*  
Creating Fashion, Defining Style

CODE | 26009





*Suryajyoti*<sup>®</sup>  
Empower Women. Elevate Style.



CODE | 26001





*Suryajyoti*  
Design Culture Tradition Taste



*Suryajyoti*  
Tegam Odha Satava Tada







*Suryajyoti*®  
Creating Fashion, Enriching Lives



CODE | 26007

*Suryajyoti*<sup>®</sup>  
Drapery of India. Exclusive Store





*Suryajyoti*  
Drapes | Sarees | Salwar | Suits







CODE | 26005



CODE | 26002







*Suryajyoti*  
Dresses & Sarees Collection



CODE | 26012







*Suryajyoti*®

*Dresses Cotton Salwar Suits*



**NAISHAA**

THE REAL CHARM OF A LADY

VOL-26



*Suryajyoti*<sup>®</sup>  
Dresses Sarees Kurtis Scarves



CODE | 26004





*Suryajyoti*®  
Empower. Educate. Entertain. Inspire.



CODE | 26006







26001



26002



26003



26004



26005



26006



26007



26008



26009



26010



26011



26012



*Suryajyoti*<sup>®</sup>  
Tajvan Fashion Collection







CODE | 26010







CODE | 26008





CODE | 26011

*Suryajyoti*  
Drapes | Sarees | Salwar | Kurtis



CODE | 26003