

# **MF SONI KUDI STITCHED VOL 5 - Dress Material**

**No Of Pieces:** 12 Pieces

**Brand:** MF

**Top Fabric:** Pure Heavy Cotton Printed Stitched Material

**Bottom Fabric:** Pure Heavy Cotton Printed Patiyala Stitched Material

**Dupatta Fabric:** Pure Heavy Cotton Printed

**Top Length:** 40-42 C.M

**Type:** Stitched(Readymade)

**Fabric:** Pure Heavy Cotton

**Weight:** 9 KG



*Soni Kudi*  
**VARIETY**

of colors and intricate patterns that would "stand apart"





THE MOST EFFEMINATE DRESSES TO BRING OUT THE DIVA IN YOU.



*Soni Kudi*

504



*Soni Kudi*

505







THE MOST EFFEMINATE DRESSES TO BRING OUT THE DIVA IN YOU.



THE MOST EFFEMINATE DRESSES TO BRING OUT THE DIVA IN YOU.

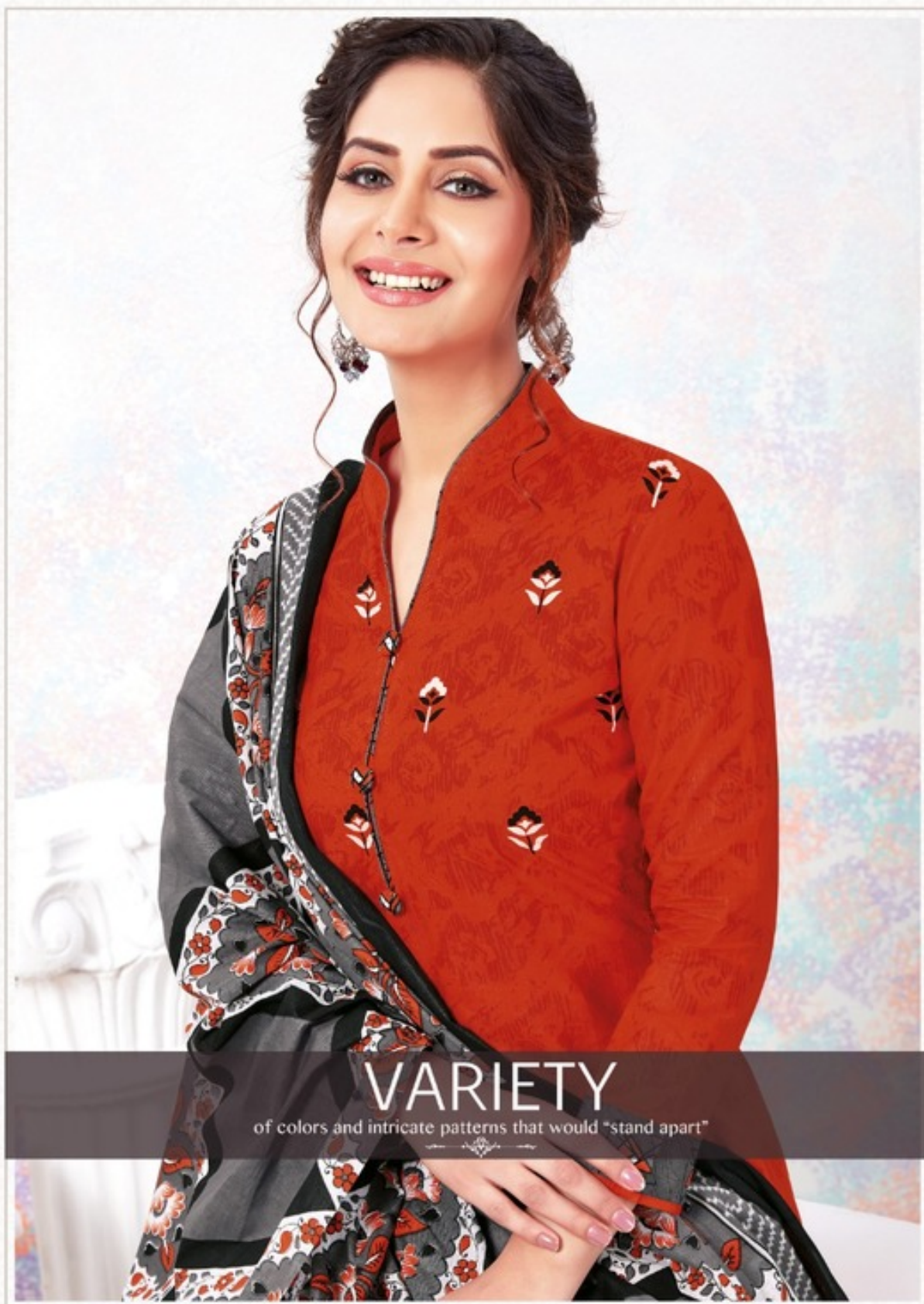


*Soni Kudi*

508







# VARIETY

of colors and intricate patterns that would "stand apart"

*Soni Kudi*

511





*Soni Kudi*

502





*Soni Kudi*

501





*Soni Kudi*

506







501



502



503



504



505



506



507



508



509



510



511



512

*Soni Kudi*  
VOL-5  
*Patijala Special*



*Soni Kudi*

509





*Soni Kudi*  
VOL-5  
*Patiyala Special*



*Soni Kudi*

503





*Soni Kudi*

510





*Soni Kudi*

512





*Soni Kudi*

507

